



**EP REFURBISHMENT**

# EFXZ-301-H/E

4-wheel Li-ion counterbalance  
forklift 3000kg



Innovation Through Simplicity



EP EQUIPMENT CO.,LTD

V2410.01

[www.ep-equipment.com](http://www.ep-equipment.com)

Email: [info@ep-ep.com](mailto:info@ep-ep.com)

EP Industrial Park, Xiaquan Village, Lingfeng Street, Anji County, Huzhou City,  
Zhejiang Province

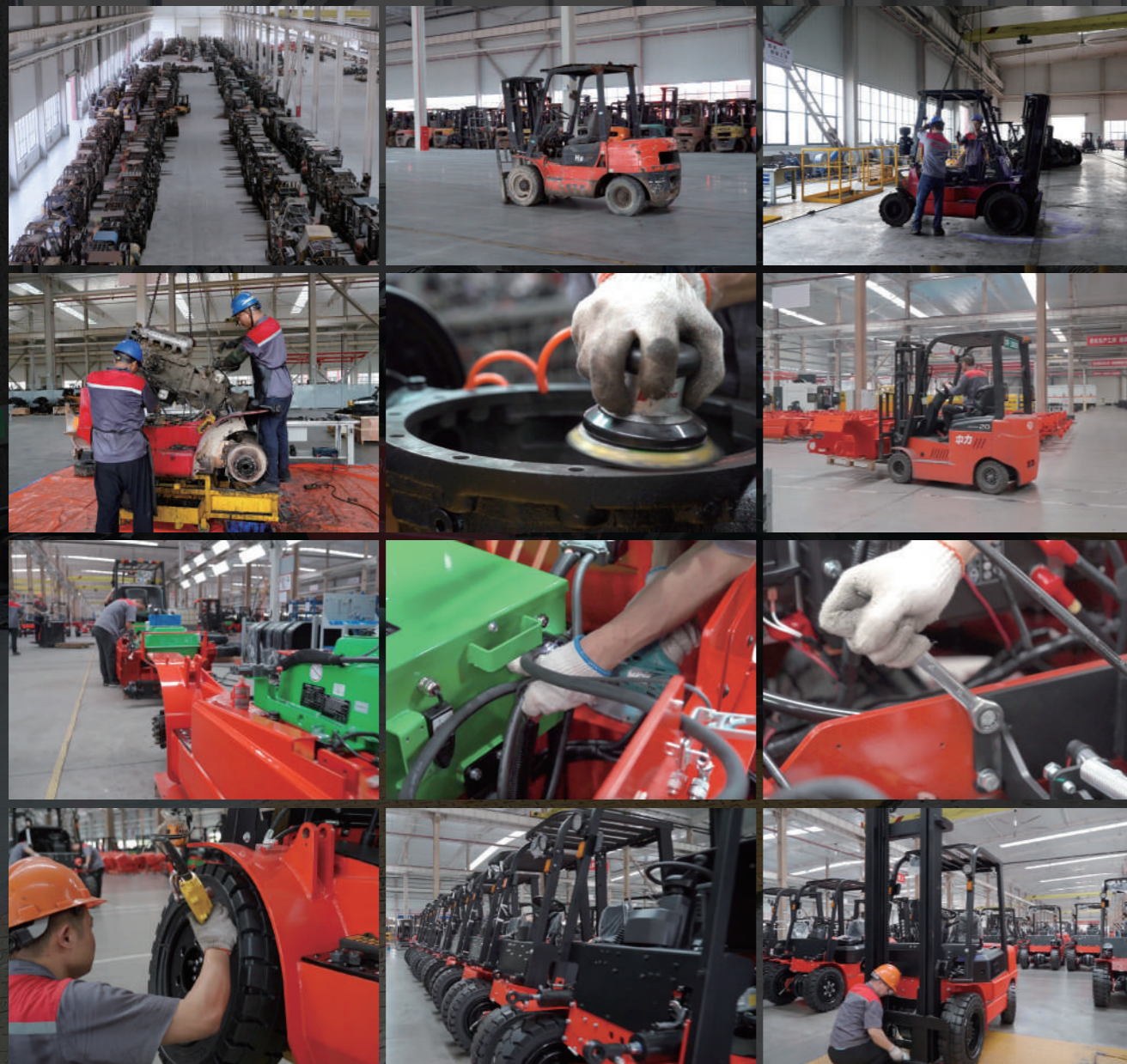


# ABOUT REFURBISHMENT

The EFXZ series is a step-forward revolution started by EP Equipment, driving the transition from IC to electric. EP recycles used IC forklifts and through proper refurbishment, launches the innovative lithium-powered forklifts to the markets. It's more than a technical upgrade - it's a strategic move with sustainability and cost savings.

Take out the engine, the tank and the gear box, and keep the chassis, the front axle and the counterweight, and most importantly, add a new heart - EP's self-developed lithium-ion battery to give the used IC truck a second full life. The remanufactured EFXZ-301-H/E delivers comparable performance, reliable quality, and high safety standards at significantly reduced costs both on initial investment and daily operation, all while contributing to a greener future.

EP refurbishment brings you an economic lithium-powered forklift as good and durable as a new one, and addresses the issue of carbon footprint, offering a competitive edge in the material handling industry.



## In-Depth Refurbishment Process

The EFXZ-301-H/E undergoes a meticulous remanufacturing process in EP remanufacturing production base, which boasts a talented team and automated equipment. It involves a comprehensive and in-depth disassembly of used IC forklifts, more than simple cosmetic remanufacturing. The chassis, the counterweight, and the front axle are thoroughly inspected and remanufactured. The new core, EP's innovative lithium technology, replaces the engine to empower the truck. The EFXZ-301-H/E combines the best of both worlds, the robustness of IC forklifts and the advanced lithium power system.

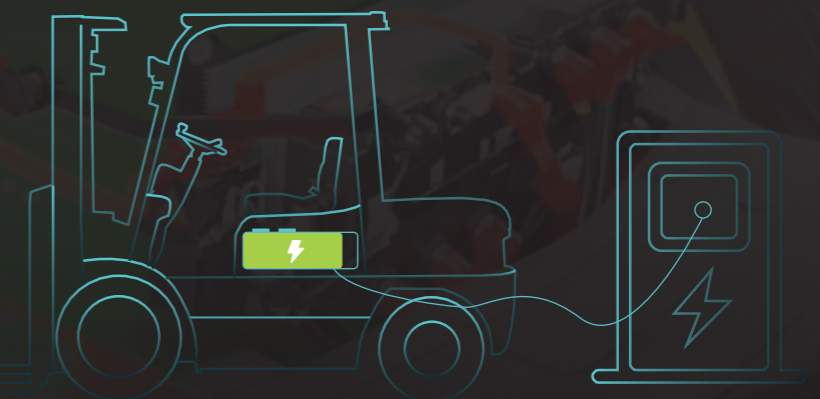
- **Disassembly:**  
The used IC forklifts are carefully disassembled to separate chassis, counterweights and front axles from those that are damaged or worn out.
- **Component inspection:**  
Parts are inspected for their potential for remanufacturing.
- **Shot blasting and painting:**  
Parts are cleaned to remove contaminants and restored to a usable condition.
- **Re-assembly:**  
Remanufactured parts are reassembled into the lithium-ion forklift. Key components come from EP's iconic and market-proven models, like the mast same as the one used in the EFL2 series, ensuring reliable performance and durability.
- **Rigorous testing and quality control:**  
The remanufactured forklift undergoes rigorous testing to ensure reliability and safety.



## Advanced Lithium Technology

EP has been succeeding in IC-to electric transformation since the EFL series forklifts was launched in 2020 and advanced lithium power solutions. The lithium-powered EFXZ-301-H/E produces zero emissions and operates more quietly than IC forklifts, aligning with global sustainability goals. Additionally, it can significantly reduce fuel costs by hundreds of dollars per week and requires less maintenance, lowering overall costs for daily operation. The lithium technology is also known for its energy efficiency and provides fast and opportunity charging, which enhances productivity and reduces downtime.

- 🔋 OPPORTUNITY CHARGING
- 🔧 ZERO MAINTENANCE
- 🔇 QUIET
- ♻️ ZERO EMISSIONS
- € REDUCE COST



## Rigorous Testing and Quality Control

Reliability and safety take high priorities. The EFXZ-301-H/E undergoes the rigorous tests, including load capacity testing, brake performance evaluation, endurance testing, and safety system checks. These ensure that the EFXZ series meets the same quality and safety standards as new ones.



## Renewed Appearance

The refurbishment process not only ensures that the used truck functions effectively but also appears aesthetically pleasing. The renewed EFXZ-301-H/E goes through surface treatment process, including shot blasting and painting, making it as good as new EP forklifts.



## Long Lifespan – Warranty Guaranteed with Same Standard as New Models

The lifespan of the EFXZ-301-H/E can be comparable to new EP forklifts and all parts offer quality and reliability assurance. There is no compromise on its performance, its durability as well as the warranty policy support.



EFXZ-301-H

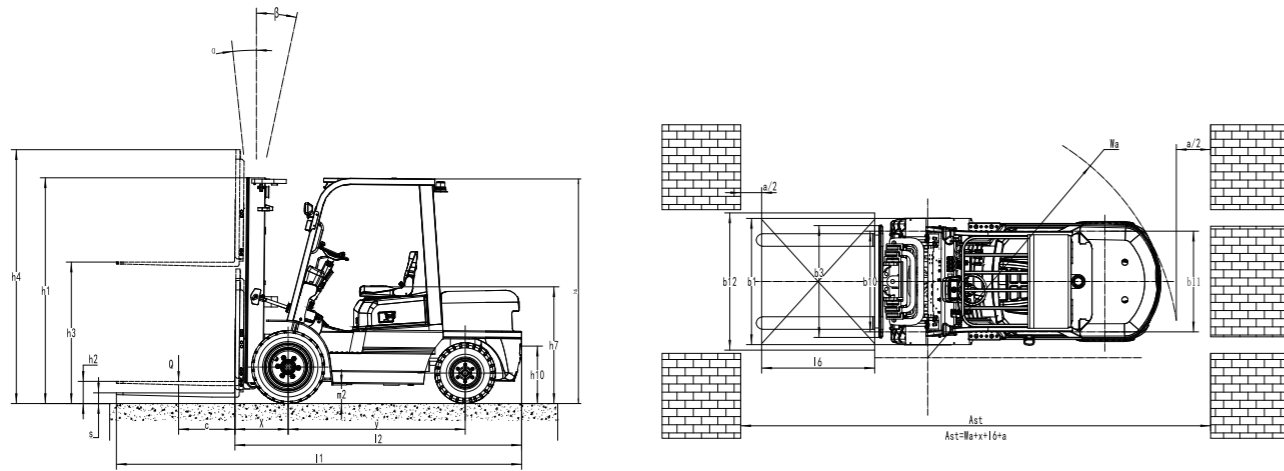


EFXZ-301-E

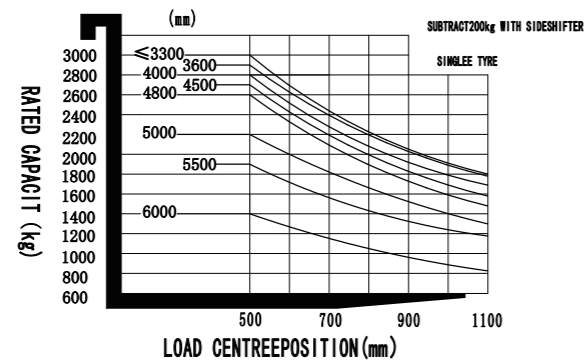
## 4-wheel Li-ion counterbalance forklift 3000kg EFXZ-301-H/E

Distinguishing mark	1.1	Manufacturer		EP	EP	
	1.2	Model designation		EFXZ301-H	EFXZ301-E	
	1.3	Drive unit		Electric	Electric	
	1.4	Operator type		Seated	Seated	
Service weight	1.5	rated capacity	Q	kg	3000	3000
	1.6	Load center distance	c	mm	500	500
	1.8	Load distance, centre of drive axle to fork	x	mm	481	481
Tyres/chassis	1.9	Wheelbase	y	mm	1750	1700
	2.1	Service weight		kg	4200	4110
	2.2	Axle loading, laden front/rear		kg	6374/868	6374/832
	2.3	Axle loading, unladen front/rear		kg	1642/2530	1642/2550
	3.1	Tyre type			Pneumatic	Pneumatic
	3.2	Tyre size, front			28X9-15-14PR	28X9-15-14PR
Dimensions	3.3	Tyre size, rear			6.50-10-10PR	6.50-10-10PR
	3.5	Wheels, number front/rear (x=drive wheels)		mm	2x/ 2	2x/ 2
	3.6	Tread, front	b <sub>10</sub>	mm	1000	1000
	3.7	Tread, rear	b <sub>11</sub>	mm	980	980
	4.1	Tilt of mast/fork carriage forward/backward	α/β	°	6/ 12	6/ 12
	4.2	Height, mast lowered	h <sub>1</sub>	mm	2100	2100
	4.3	Free lift	h <sub>2</sub>	mm	120	120
	4.4	Lift height	h <sub>3</sub>	mm	3000	3000
	4.5	Height, mast extended	h <sub>4</sub>	mm	4110	4110
	4.7	Height of overhead/ guard cabin	h <sub>6</sub>	mm	2170	2145
Performance data	4.8	Seat height/standing height	h <sub>7</sub>	mm	1115	1115
	4.12	Tow coupling height	h <sub>10</sub>	mm	340	410
	4.19	Overall length	l <sub>1</sub>	mm	3730	3730
	4.20	Length to face of forks	l <sub>2</sub>	mm	2690	2660
	4.21	Overall width	b <sub>1</sub> /b <sub>2</sub>	mm	1225	1225
	4.22	Fork dimensions	s×e×l	mm	45×122×1070	45×122×1070
	4.23	A,B Fork carriage class/type A, B			3A	3A
	4.24	Fork carriage width	b <sub>3</sub>	mm	1145	1145
	4.31	Ground clearance, laden, below mast	m <sub>1</sub>	mm	150	150
	4.32	Ground clearance, center of wheelbase	m <sub>2</sub>	mm	200	140
	4.34.1	Aisle width for pallets 1000×1200 crossways	Ast	mm	4170	4170
	4.34.2	Aisle width for pallets 800×1200 crossways	Ast	mm	4098	4098
Electric-engine	4.35	turning radius	Wa	mm	2400	2340
	5.1	Travel speed, laden/unladen		km/h	11/12	11/12
	5.2	Lifting speed, laden/unladen		m/s	0.26/0.36	0.26/0.36
	5.3	Lowering speed, laden/unladen		m/s	0.4/0.43	0.4/0.43
	5.8	Max. gradeability, laden/unladen			15/24	15/24
	5.10	Service brake		kW	Hydraulic	Hydraulic
Addition data	5.11	Parking brake		kW	Mechanical	Mechanical
	6.1	Drive motor rating S2 60 min		V/Ah	10	10
	6.2	Lift motor rating at S3 15%			16	16
	6.4	Battery voltage/nominal capacity			80V280AH	80V280AH
Addition data	8.1	Type of drive unit			AC	AC
	10.5	Steering design			hydraulic	hydraulic
	10.7	Sound pressure level at the driver's ear			< 74	< 74

If there are improvements of technical parameters or configurations, no further notice will be given. The diagram shown may contain non-standard configurations.



RATED CAPACITIES AND LOAD CENTRE POSITION GRAPH



## Mast Option:

Mast types	Lift height (h3) mm	Height, Mast		Height, Free lift(h2)		
		Height, mast lowered(h1) mm	Height, mast extended(h4)		No shelving mm	With shelving mm
			No shelving mm	With shelving mm		
2-Standard Mast	2700	1910	3330	3795	120	120
	3000	2060	3630	4095	120	120
	3300	2210	3930	4395	120	120
	3500	2310	4130	4595	120	120
	3600	2360	4230	4695	120	120
	4000	2610	4630	5095	120	120
	4300	2760	4930	5395	120	120
	4500	2860	5130	5595	120	120
2-Free Mast	3000	2040	3630	4095	1410	945
	3300	2190	3930	4395	1560	1095
	3600	2340	4230	4695	1710	1245
3-Free Mast	4300	2040	4930	5395	1410	945
	4500	2120	5130	5595	1490	1025
	4800	2225	5430	5895	1595	1130
	5000	2310	5630	6095	1680	1215
	5500	2560	6130	6595	1930	1465
	6000	2810	6630	7095	2180	1715

## Option:

Optional items	EFXZ301-H/E
Fork dimension	<input type="radio"/> 122*45*1070 <input type="radio"/> 122*45*1150 <input type="radio"/> 122*45*1220 <input type="radio"/> 122*45*1370 <input type="radio"/> 122*45*1520 <input type="radio"/> 122*45*1600 <input type="radio"/> 122*45*1700 <input type="radio"/> 122*45*1820 <input type="radio"/> 122*45*2000 <input type="radio"/> 122*45*2200 <input type="radio"/> 122*45*2400
Front wheel material	<input type="radio"/> Pneumatic <input checked="" type="radio"/> Normal solid <input type="radio"/> Traceless solid
Rear wheel material	<input type="radio"/> Pneumatic <input checked="" type="radio"/> Normal solid <input type="radio"/> Traceless solid
Battery capacity	<input type="radio"/> 80V205AH <input checked="" type="radio"/> 80V280AH
Charger	<input checked="" type="radio"/> 80V60A external <input type="radio"/> 80V35A external <input type="radio"/> 80V100A external
Battery indicator	<input checked="" type="radio"/> With hourmeter (Bluetooth) without PSE
Seat type	<input checked="" type="radio"/> Suspension without armrest + safety belt switch <input type="radio"/> Comfortable + safety belt logic switch
Attachments	<input type="radio"/> No <input checked="" type="radio"/> Built-in sideshifter <input type="radio"/> External shifter <input type="radio"/> Fork positioner with external shifter sideshift
Traction pin	<input checked="" type="radio"/> Yes and not customized
Electrostatic chain	<input checked="" type="radio"/> Yes and not customized
Front lamp	<input checked="" type="radio"/> LED
Rear lamp	<input checked="" type="radio"/> No <input type="radio"/> LED
Warning lamp	<input checked="" type="radio"/> Yes and not customized
Steering lamp	<input checked="" type="radio"/> LED
Blue lamp	<input checked="" type="radio"/> Rear <input type="radio"/> Front and rear
Area warning lamp	<input checked="" type="radio"/> No <input type="radio"/> Both side <input type="radio"/> Both side and rear
Rearview mirror	<input checked="" type="radio"/> One in front <input type="radio"/> Two on sides <input type="radio"/> Two on side and one in front
Buzzer	<input checked="" type="radio"/> Yes and not customized
OPS system	<input checked="" type="radio"/> Yes and not customized
USB interface	<input checked="" type="radio"/> USB with A type
Telematics	<input checked="" type="radio"/> Yes and not customized
Turn speed control	<input checked="" type="radio"/> No
Heating system for lithium battery charging	<input checked="" type="radio"/> No <input type="radio"/> Yes and not customized
Operator identification device	<input checked="" type="radio"/> No <input type="radio"/> Swipe card device
Hydraulic lever system	<input checked="" type="radio"/> Mechanical lever
Rear grab handle with horn	<input checked="" type="radio"/> Yes and not customized
Cabin	<input type="radio"/> Basic half cabin <input type="radio"/> Upgrade half cabin
Overhead guard	<input checked="" type="radio"/> With stalinite
Windshield washer system	<input checked="" type="radio"/> Yes only with Cabin

Note: Standard Optional - Inconformity