

# 01 ELECTRIC PALLET TRUCK

<p><b>MINI F1</b></p> <ul style="list-style-type: none"> <li>-Capacity 1.5t</li> <li>-Fork width 560/685mm</li> <li>-Fork length 1150mm</li> <li>-24V/65Ah AGM battery</li> <li>-Travel speed 4.5 km/h</li> <li>-DC controller</li> <li>-Integrated charger</li> </ul> 	<p><b>MINI F2</b></p> <ul style="list-style-type: none"> <li>-Capacity 1.5t</li> <li>-Fork width 560/685mm</li> <li>-Fork length 1150mm</li> <li>-24V/20Ah removable Li-ion battery</li> <li>-Travel speed 4.5 km/h</li> <li>-DC controller</li> </ul> 	<p><b>MINI F3</b></p> <ul style="list-style-type: none"> <li>-Capacity 1.5t</li> <li>-Fork width 560/685mm</li> <li>-Fork length 1150mm</li> <li>-24V/20Ah removable Li-ion battery</li> <li>-Travel speed 4.5 km/h</li> <li>-DC controller</li> </ul> 	<p><b>MINI F4</b></p> <ul style="list-style-type: none"> <li>-Capacity 1.5t</li> <li>-Fork width 560/685mm</li> <li>-Fork length 1150mm</li> <li>-24V/20Ah removable Li-ion battery</li> <li>-Travel speed 4.5 km/h</li> <li>-DC controller</li> </ul> 	<p><b>MINI F4 with scale</b></p> <ul style="list-style-type: none"> <li>-Capacity 1.5t</li> <li>-Fork width 560/685mm</li> <li>-Fork length 1150mm</li> <li>-24V/20Ah removable Li-ion battery</li> <li>-Travel speed 4.5 km/h</li> <li>-DC controller</li> </ul> 	<p><b>MINI F4 201</b></p> <ul style="list-style-type: none"> <li>-Capacity 2.0t</li> <li>-Fork width 560/685mm</li> <li>-Fork length 1150mm</li> <li>-48V/20Ah removable Li-ion battery</li> <li>-Travel speed 5.0 km/h</li> <li>-BLDC controller</li> </ul> 	<p><b>MINI EPL153(1)</b></p> <ul style="list-style-type: none"> <li>-Capacity 1.5t</li> <li>-Fork width 560/685mm</li> <li>-Fork length 1150mm</li> <li>-24V/20Ah removable Li-ion battery</li> <li>-Travel speed 5.0 km/h</li> <li>-DC controller</li> </ul> 	
<p><b>MINI EPT20-15ET2H</b> - All road</p> <ul style="list-style-type: none"> <li>-Capacity 1.5t</li> <li>-Fork width 560/685mm</li> <li>-Fork length 1150mm</li> <li>-24V/65Ah AGM battery</li> <li>-Travel speed 4.0 km/h</li> <li>-DC controller</li> <li>-Integrated charger</li> </ul> 	<p><b>MINI EPL154</b></p> <ul style="list-style-type: none"> <li>-Capacity 1.5t</li> <li>-Fork width 540/685mm</li> <li>-Fork length 1150mm</li> <li>-24V/30Ah removable Li-ion battery</li> <li>-Travel speed 5.0 km/h</li> <li>-DC controller</li> </ul> 	<p><b>MINI EPL185</b></p> <ul style="list-style-type: none"> <li>-Capacity 1.8t</li> <li>-Fork width 540/685mm</li> <li>-Fork length 1150mm</li> <li>-48V/20Ah removable Li-ion battery</li> <li>-Travel speed 5.5 km/h</li> <li>-DC controller</li> </ul> 	<p><b>MAX WPL202</b></p> <ul style="list-style-type: none"> <li>-Capacity 12.0t</li> <li>-Fork width 540/685mm</li> <li>-Fork length 1150mm</li> <li>-24V/100Ah Li-ion battery</li> <li>-Travel speed 6.0 km/h</li> <li>-AC controller</li> <li>-Integrated charger</li> </ul> 	<p><b>MAX EPT20-20WA EPT25-WA</b></p> <ul style="list-style-type: none"> <li>-Capacity 2.0/2.5t</li> <li>-Fork width 540/685mm</li> <li>-Fork length 1150mm</li> <li>-24V/210Ah/240Ah Lead acid battery</li> <li>-24V/205Ah Li-ion battery</li> <li>-Travel speed 5.5 km/h</li> <li>-AC controller</li> </ul> 	<p><b>MAX KPL201(H)</b></p> <ul style="list-style-type: none"> <li>-Capacity 2.0t</li> <li>-Fork width 540/685mm</li> <li>-Fork length 1150mm</li> <li>-24V/205Ah Li-ion battery</li> <li>-24V/210Ah/280Ah/345Ah Lead acid battery</li> <li>-Travel speed 10.0/12.0 km/h</li> <li>-AC controller</li> </ul> 	<p><b>MAX RPL201(H)</b></p> <ul style="list-style-type: none"> <li>-Capacity 2.0t</li> <li>-Fork width 540/685mm</li> <li>-Fork length 1150/1220mm</li> <li>-24V/205Ah Li-ion battery</li> <li>-24V/210Ah/280Ah/345Ah Lead acid battery</li> <li>-Travel speed 8.0/12.0 km/h</li> <li>-AC controller</li> </ul> 	<p><b>MAX RPL251/301</b></p> <ul style="list-style-type: none"> <li>-Capacity 2.5/3.0t</li> <li>-Fork width 560/685mm</li> <li>-Fork length 1150/1220mm</li> <li>-24V/205Ah Li-ion battery</li> <li>-24V/210Ah/280Ah/345Ah Lead acid battery</li> <li>-Travel speed 6.0 km/h</li> <li>-AC controller</li> </ul> 

# 02 ELECTRIC STACKER

<p><b>MINI ES12-12MM</b></p> <ul style="list-style-type: none"> <li>-Capacity 1.2t</li> <li>-Lifting height 1605-1955mm</li> <li>-24V/85Ah AGM / 80Ah Li-ion</li> <li>-DC controller</li> <li>-Integrated charger</li> </ul> 	<p><b>MINI ESA121-M</b></p> <ul style="list-style-type: none"> <li>-Capacity 1.2t</li> <li>-Lifting height 1613-1953mm</li> <li>-24V/105Ah/125Ah AGM battery</li> <li>-24V/100Ah Li-ion battery</li> <li>-DC controller</li> <li>-Integrated charger</li> </ul> 	<p><b>MINI EST124</b></p> <ul style="list-style-type: none"> <li>-Capacity 1.2t</li> <li>-Lifting height 2513-3613mm</li> <li>-24V/80Ah AGM / 80Ah Li-ion</li> <li>-DC controller</li> <li>-Integrated charger</li> </ul> 	<p><b>MINI EST122/ESL122</b></p> <ul style="list-style-type: none"> <li>-Capacity 1.2t</li> <li>-Lifting height 2513-3613mm</li> <li>-24V/85Ah/105Ah AGM battery</li> <li>-24V/80Ah Li-ion</li> <li>-DC controller</li> <li>-Integrated charger</li> </ul> 	<p><b>MINI ES12-12ES</b></p> <ul style="list-style-type: none"> <li>-Capacity 1.2t</li> <li>-Lifting height 1205-3815mm</li> <li>-24V/105Ah/125Ah AGM / 80Ah Li-ion</li> <li>-DC controller</li> <li>-Integrated charger</li> </ul> 	<p><b>MINI ESA121</b></p> <ul style="list-style-type: none"> <li>-Capacity 1.2t</li> <li>-Lifting height 2513-4113mm</li> <li>-24V/105Ah/125Ah AGM battery</li> <li>-24V/100Ah Li-ion battery</li> <li>-DC controller</li> <li>-Integrated charger</li> </ul> 	<p><b>MINI ES15-15ES</b></p> <ul style="list-style-type: none"> <li>-Capacity 1.5t</li> <li>-Lifting height 2515-4165mm</li> <li>-24V/125Ah AGM battery</li> <li>-DC controller</li> <li>-Integrated charger</li> </ul> 
<p><b>MINI ES12-25MM ES12-25DM</b></p> <ul style="list-style-type: none"> <li>-Capacity 1.2t</li> <li>-Lifting height 1570-1920mm</li> <li>-24V/85Ah/105Ah/125Ah AGM battery</li> <li>-24V/80Ah Li-ion battery</li> <li>-DC controller</li> </ul> 	<p><b>MINI ESA121-D</b></p> <ul style="list-style-type: none"> <li>-Capacity 1.2t</li> <li>-Lifting height 2480-4080mm</li> <li>-24V/105Ah/125Ah AGM battery</li> <li>-24V/100Ah Li-ion battery</li> <li>-Integrated charger</li> </ul> 	<p><b>MAX WSA121/161</b></p> <ul style="list-style-type: none"> <li>-Capacity 1.2/1.6t</li> <li>-Lifting height 2500-5500mm</li> <li>-24V/210Ah/240Ah Lead acid battery</li> <li>-24V/100Ah/205Ah Li-ion battery</li> <li>-AC controller</li> <li>-Integrated charger</li> </ul> 	<p><b>MAX ES20-WA</b></p> <ul style="list-style-type: none"> <li>-Capacity 2.0t</li> <li>-Lifting height 2500-5500mm</li> <li>-24V/280Ah Lead acid battery</li> <li>-24V/105Ah/205Ah Li-ion battery</li> <li>-AC controller</li> </ul> 	<p><b>MAX ES12-25WA</b></p> <ul style="list-style-type: none"> <li>-Capacity 1.2t</li> <li>-Lifting height 2470-5000mm</li> <li>-24V/210Ah Lead acid battery</li> <li>-24V/105Ah Li-ion battery</li> <li>-AC controller</li> </ul> 	<p><b>MAX ES14-30WA</b></p> <ul style="list-style-type: none"> <li>-Capacity 1.4t</li> <li>-Lifting height 2640-5000mm</li> <li>-24V/210Ah Lead acid battery</li> <li>-24V/205Ah Li-ion battery</li> <li>-AC controller</li> </ul> 	<p><b>MAX ES18-40WA</b></p> <ul style="list-style-type: none"> <li>-Capacity 1.8t</li> <li>-Lifting height 2640-5000mm</li> <li>-24V/210Ah Lead acid battery</li> <li>-24V/205Ah Li-ion battery</li> <li>-AC controller</li> </ul> 
<p><b>MAX ES16-RS</b></p> <ul style="list-style-type: none"> <li>-Capacity 1.6t</li> <li>-Lifting height 2700-5500mm</li> <li>-24V/210Ah/280Ah/345Ah Lead acid battery</li> <li>-24V/150Ah/205Ah Li-ion battery</li> <li>-AC controller</li> </ul> 	<p><b>MAX RSC082/122</b></p> <ul style="list-style-type: none"> <li>-Capacity 0.8/1.2t</li> <li>-Lifting height 2000-3300mm</li> <li>-24V/210Ah Lead acid battery</li> <li>-24V/205Ah Li-ion battery</li> <li>-AC controller</li> </ul> 					

## Initial lifting

<p><b>MINI ES12-12MMi</b></p> <ul style="list-style-type: none"> <li>-Capacity 1.2t</li> <li>-Lifting height 1605-1955mm</li> <li>-24V/85Ah AGM / 80Ah Li-ion</li> <li>-DC controller</li> <li>-Integrated charger</li> </ul> 	<p><b>MINI ESi161</b></p> <ul style="list-style-type: none"> <li>-Capacity 1.6t</li> <li>-Up fork capacity 0.8t</li> <li>-Lifting Height 1608mm</li> <li>-24V/80Ah Li-ion battery</li> <li>-DC Controller</li> <li>-Integrated charger</li> </ul> 	<p><b>MAX ES12-12WAI</b></p> <ul style="list-style-type: none"> <li>-Capacity 1.2t</li> <li>-Lifting height 1600-3900mm</li> <li>-24V/210Ah Lead acid battery</li> <li>-24V/205Ah Li-ion battery</li> <li>-AC Motor</li> </ul> 	<p><b>MAX WSi161</b></p> <ul style="list-style-type: none"> <li>-Capacity 1.6t</li> <li>-Lifting height 2600-5500mm</li> <li>-24V/210Ah/240Ah Lead acid battery</li> <li>-24V/100Ah/205Ah Li-ion battery</li> <li>-AC controller</li> <li>-Integrated charger</li> </ul> 	<p><b>MAX ES16-RSi</b></p> <ul style="list-style-type: none"> <li>-Capacity 1.6t</li> <li>-Lifting height 700-5500mm</li> <li>-24V/280Ah/345Ah Lead acid battery</li> <li>-24V/150Ah/205Ah Li-ion battery</li> <li>-AC controller</li> </ul> 	<p><b>MAX KSi201</b></p> <ul style="list-style-type: none"> <li>-Capacity 2.0t</li> <li>-Up fork capacity 1.0t</li> <li>-Lifting height 1600/2100mm</li> <li>-24V/205Ah Li-ion battery</li> <li>-AC controller</li> <li>-Integrated charger</li> </ul> 
---	---	--	--	--	--

# 03 ORDER PICKER & TOW TRACTOR

<p><b>MAX JX0-30</b></p> <ul style="list-style-type: none"> <li>-Capacity 90/110/136KG</li> <li>-Lifting height 3000mm</li> <li>-24V/120Ah Lead acid battery</li> <li>-24V/135Ah Li-ion battery</li> <li>-DC controller</li> </ul> 	<p><b>MAX JX1</b></p> <ul style="list-style-type: none"> <li>-Capacity 363KG</li> <li>-Lifting height 3200-4800mm</li> <li>-24V/210Ah/224Ah/270Ah Lead acid battery</li> <li>-24V/205Ah Li-ion battery</li> <li>-AC controller</li> </ul> 	<p><b>MAX TPL251</b></p> <ul style="list-style-type: none"> <li>-Capacity 2.5t</li> <li>-Fork width 560/685mm</li> <li>-Fork length 1150mm</li> <li>-24V/280Ah/410Ah Li-ion battery</li> <li>-Travel speed 14.5 km/h</li> <li>-AC controller</li> </ul> 	<p><b>MINI QDD10</b></p> <ul style="list-style-type: none"> <li>-Capacity 1.0t</li> <li>-Travel speed 5.0 km/h</li> <li>-24V/50Ah Lead acid battery</li> <li>-DC controller</li> </ul> 	<p><b>MINI QDD10L</b></p> <ul style="list-style-type: none"> <li>-Capacity 1.0t</li> <li>-Travel speed 5.0 km/h</li> <li>-24V/20Ah Li-ion battery</li> <li>-DC controller</li> </ul> 	<p><b>MINI QDD10/15T</b></p> <ul style="list-style-type: none"> <li>-Capacity 1.0/1.5t</li> <li>-Travel speed 5.0 km/h</li> <li>-24V/20Ah Li-ion battery</li> <li>-DC controller</li> </ul> 	<p><b>MAX QDD301T/601T</b></p> <ul style="list-style-type: none"> <li>-Capacity 3.0/6.0t</li> <li>-Travel speed 15.0/17.0 km/h</li> <li>-48V/240Ah/275Ah/325Ah Lead acid battery</li> <li>-48V/280Ah Li-ion battery</li> <li>-AC controller</li> </ul> 
--	---	---	--	--	---	--

# 04 REACH TRUCK

<p><b>MAX CQE15S</b></p> <ul style="list-style-type: none"> <li>-Capacity 1.5t</li> <li>-Lifting height 3000-5500mm</li> <li>-24V/280Ah Lead acid battery</li> <li>-24V/205Ah Li-ion battery</li> <li>-AC controller</li> </ul> 	<p><b>MAX CQD20L</b></p> <ul style="list-style-type: none"> <li>-Capacity 2.0t</li> <li>-Lifting height 2700-12000mm</li> <li>-48V/405Ah Li-ion battery</li> <li>-AC controller</li> </ul> 	<p><b>MINI XP15</b></p> <ul style="list-style-type: none"> <li>-Capacity 1.5t</li> <li>-Fork width: 540mm</li> <li>-Fork length 1220mm</li> <li>-24V/60Ah removable Li-ion battery</li> <li>-Travel speed 5.0 km/h / 1m/s</li> <li>-AC controller</li> <li>-Positioning: 2D visual navigation</li> </ul> 
---	--	--

# 05 X-MOVER

# 06 THREE-WHEEL ELECTRIC FORKLIFT

## EFS Series

**EFS151**

- Capacity 1.5t
- Lifting height 3000-4500mm
- 48V/150Ah Li-ion battery
- 48V/180Ah AGM
- AC controller
- Integrated charger



## Dual Drive


**TCL121**

- Capacity 1.2t
- Lifting height 2500-3300mm
- 80V/50Ah/100Ah Li-ion battery
- Integrated charger
- PMSM controller



**CPD15/18/20TVL**

- Capacity 1.5/1.8/2.0t
- Lifting height 3000-5000/6000mm
- 80V/150Ah/205Ah Li-ion battery
- AC controller
- Integrated charger



**TDL161/201**

- Capacity 1.6/2.0t
- Lifting height 3000-6000mm
- 48V/280Ah/405Ah Li-ion battery
- AC controller
- Integrated charger



# 07 FOUR-WHEEL ELECTRIC FORKLIFT

## ▼ EFL Series

**EFL181**  
 -Capacity 1.8t  
 -Lifting height 3000-4800mm  
 -48V/150Ah/205Ah Li-ion battery  
 -AC controller  
 -Integrated charger



**EFL201**  
 -Capacity 2.0t  
 -Lifting height 3000-5000mm  
 -80V/150Ah/205Ah/280Ah Li-ion battery  
 -AC controller  
 -Integrated charger



**EFL203(P)**  
 -Capacity 2.0t  
 -Lifting height 3000-6000mm  
 -80V/230Ah/460Ah Li-ion battery  
 -AC controller  
 -Integrated charger



**NEW**

**EFL252**  
 -Capacity 2.5t  
 -Lifting height 3000-6000mm  
 -80V/205Ah/280Ah/410Ah Li-ion battery  
 -AC controller  
 -Optional integrated charger



**EFL302/EFL352**  
 -Capacity 3.0/3.5t  
 -Lifting height 3000-6000mm  
 -80V/205Ah/280Ah/410Ah Li-ion battery  
 -AC controller  
 -Optional integrated charger



**EFL253/303/353(S/P)**  
 -Capacity 2.5/3.0/3.5t  
 -Lifting height 3000-6000mm  
 -80V/205Ah/230Ah/280Ah/410Ah/460Ah/560Ah Li-ion battery  
 -AC controller



## ▼ X Series

**EFL252X2**  
 -Capacity 2.5t  
 -Lifting height 3000-4800mm  
 -80V/100Ah/150Ah/230Ah/280Ah Li-ion battery  
 -PMS controller  
 -Integrated charger



**NEW**

**EFL252X3**  
 -Capacity 2.5t  
 -Lifting height 3000-4800mm  
 -80V/100Ah/150Ah/230Ah Li-ion battery  
 -PMS controller  
 -Integrated charger



**NEW**

**EFL302X4**  
 -Capacity 3.0t  
 -Lifting height 3000-6000mm  
 -80V/100Ah/200Ah Li-ion battery  
 -PMS controller



**NEW**

**EFL302/352/382X5**  
 -Capacity 3.0t/3.5t/3.8t  
 -Lifting height 3000-4500mm  
 -80V/280Ah/460Ah/560Ah Li-ion battery  
 -PMS controller  
 -Integrated charger



**NEW**

## ▼ LI Series

**CPD15/20L1**  
 -Capacity 1.5/2.0t  
 -Lifting height 3000-5000mm  
 -48V/280Ah/405Ah Li-ion battery  
 -AC controller



**CPD30/35L1S**  
 -Capacity 3.0/3.5t  
 -Lifting height 3000-6000mm  
 -80V/560Ah Li-ion battery  
 -AC controller



**CPD50L1**  
 -Capacity 5.0t  
 -Lifting height 3000-6000mm  
 -80V/560Ah/690Ah Li-ion battery  
 -AC controller



## ▼ Dual Drive

**CPD18/20FVL**  
 -Capacity 1.8/2.0t  
 -Lifting height 3000-6000mm  
 -80V/205Ah Li-ion battery  
 -Integrated charger  
 -AC controller



**EFL702/1002**  
 -Capacity 7.0/10.0t  
 -Lifting height 3000-6000/6030mm  
 -80V/820Ah/1230Ah Li-ion battery  
 -AC controller



**EFL803/EFL1003**  
 -Capacity 8.0-10.0t  
 -Lifting height 3000-7000mm  
 -96V/920Ah Li-ion battery  
 -PMS controller



**NEW**

## ▼ High Capacity

## ▼ High Voltage

**EFL403/453/503-HV  
 EFL503-HV-6/  
 553-HV-6**  
 -Capacity 4.0-5.5t  
 -Lifting height 3000-7000mm  
 -309V/173Ah Li-ion battery  
 -PMS controller



**NEW** ⚡

**EFL503/553-HVD  
 EFL603-HV/703-HV**  
 -Capacity 5.0-7.0t  
 -Lifting height 3000-7000mm  
 -309V/228Ah Li-ion battery  
 -PMS controller



**NEW** ⚡

**EFL803-HV/  
 EFL1003-HV**  
 -Capacity 8.0-10.0t  
 -Lifting height 3000-7000mm  
 -309V/304Ah Li-ion battery  
 -PMS controller



**NEW** ⚡

**EFL1203-HV**  
 -Capacity 12.0t  
 -Lifting height 3000-7000mm  
 -309V/304Ah Li-ion battery  
 -PMS controller



**NEW** ⚡

**EFL1603-HV/  
 EFL1803-HV**  
 -Capacity 16.0-18.0t  
 -Lifting height 4000-7000mm  
 -618.24V/228Ah Li-ion battery  
 -AC controller



**NEW** ⚡

**EFL2503-HV**  
 -Capacity 25.0t  
 -Lifting height 4000mm  
 -618.24V/456Ah Li-ion battery  
 -AC controller



**NEW** ⚡

## ▼ EP Specialty

**EFLA251B**  
 -Capacity 2.5t  
 -Lifting height 4800-6000mm  
 -80V/230Ah/460Ah Li-ion battery  
 -AC controller  
 -Integrated charger

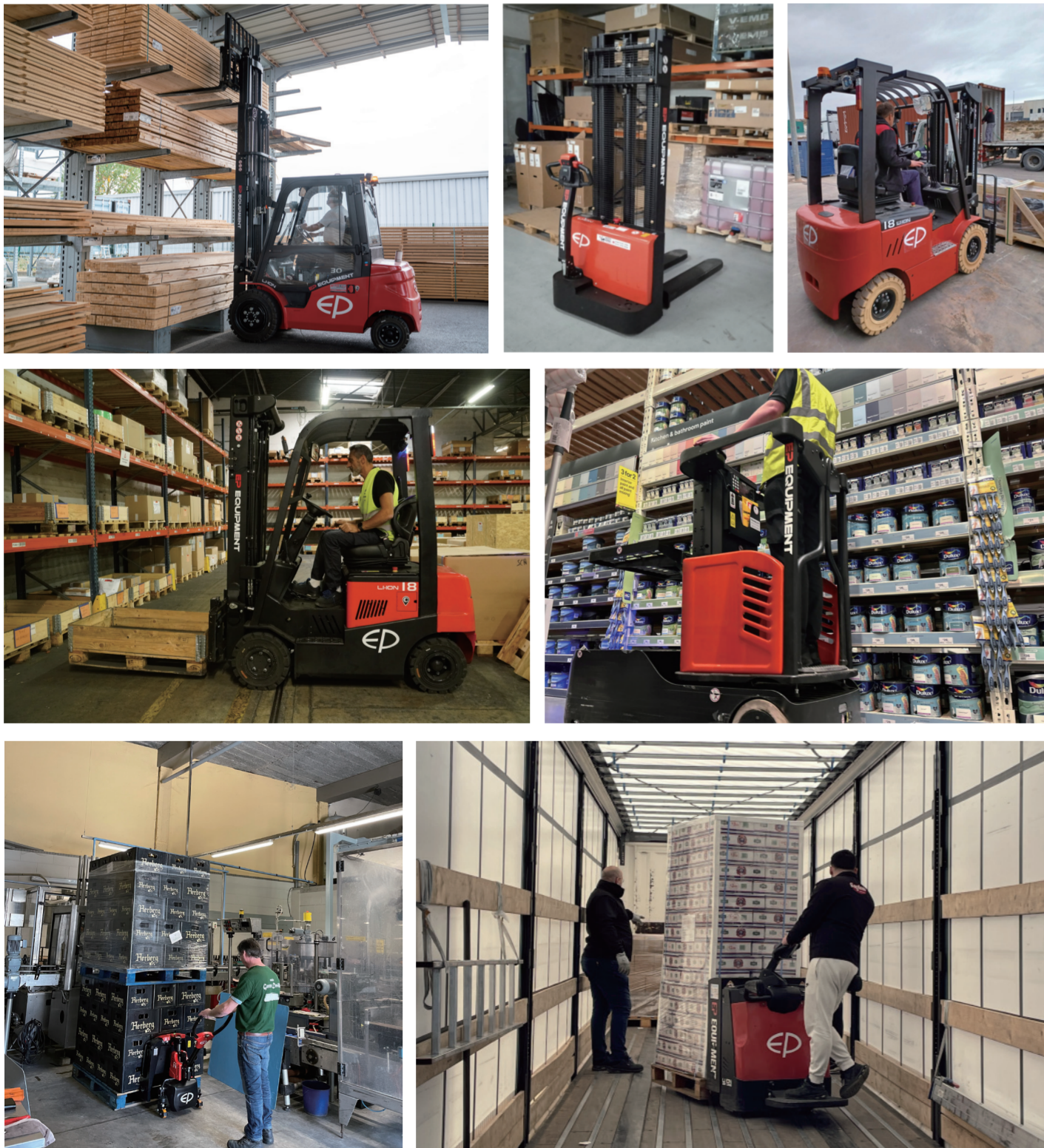


**NEW**

EP EQUIPMENT CO., LTD

info@ep-equipment.eu

## EP IN ACTION



V2408.02

# EP EUROPE

## 2024/2 PRODUCT OVERVIEW



GLOBAL MARKET LEADER  
 ON LI-ION TECHNOLOGY

LI-ION

### INTRODUCTION

At EP Equipment we strive to make the world of material handling greener and smarter. We believe in growing together with a network of partners to create a real benefit for the customer. Lithium Ion technology is the technology to change the material handling industry and it should be accessible for everyone at a reasonable price. Let's change the world together. One truck at a time.

EP EQUIPMENT CO., LTD  
 ep-equipment.com



E-P Equipment Europe  
 Alsebergsesteenweg, 454-A 1653 Dworp  
 Belgium

Office tel: 0032 28965352

E-mail: info@ep-equipment.eu

EP EQUIPMENT CO., LTD info@ep-equipment.eu