

ESi161

1600kg

Pedestrian Double-deck Stacker



EP
Let's grow together

- Multipurpose mono mast Li-Ion battery stacker with initial lifting
- Double lifting allow to move 2 pallets at the time and easily drive on ramps and uneven floor
- Central driving with stabilizing wheels for better handling, traction and stability
- Turtle button to operate in narrow spaces
- Fast charging trough integrated charger



| Manufacturer | | | EP |
|----------------------------------|-------|------|-------------|
| Model designation | | | ESi161 |
| Drive | | | Electric |
| Load capacity | Q | kg | 1600 |
| Load center distance | c | mm | 600 |
| Service weight | | kg | 510 |
| Lift height | h3 | mm | 1520 |
| Height, mast extended | h4 | mm | 1986 |
| Initial lift | h5 | mm | 115 |
| Length to face of forks | l2 | mm | 620 |
| Overall width | b1/b2 | mm | 800 |
| Fork dimensions | s/e/l | mm | 55/190/1150 |
| Turning radius | Wa | mm | 1473 |
| Max. gradeability, laden/unladen | | % | 3/10 |
| Travel speed, laden/unladen | | km/h | 4/4.5 |
| Lifting speed, laden/unladen | | m/s | 0.1/0.12 |
| Lowering speed, laden/unladen | | m/s | 0.1/0.07 |
| Battery voltage/nominal capacity | | V/Ah | 24/100 |

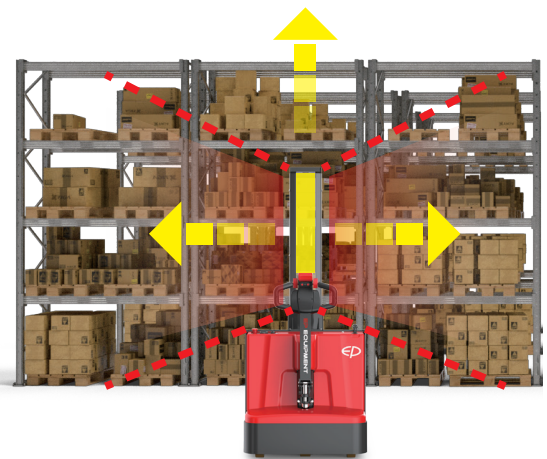
EP EQUIPMENT CO.,LTD
www.ep-equipment.com

V2412.02

FEATURES

■ All round visibility ensuring safety and precision

The mono mast with a transparent panel offers an optimal view of the fork tips, which ensures precise stacking and retrieval safety.



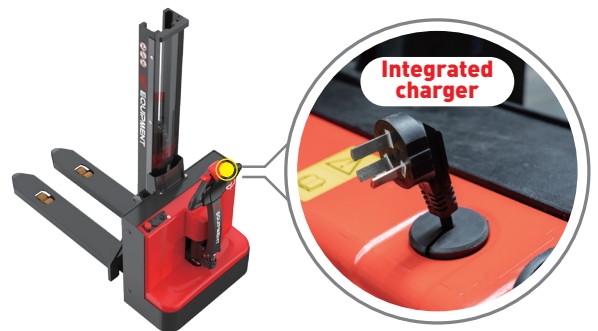
■ Compact design and turtle button for great maneuverability

The compact chassis and the turtle button qualify ESi161 for high maneuverability when loading and unloading in confined spaces or lorries.



■ Lithium technology with integrated charger

The ESi161 adopts a Li-ion battery and an integrated charger as standard to increase uptime thanks to flexible and fast charging support.



■ Middle drive wheel for easy traction and operation

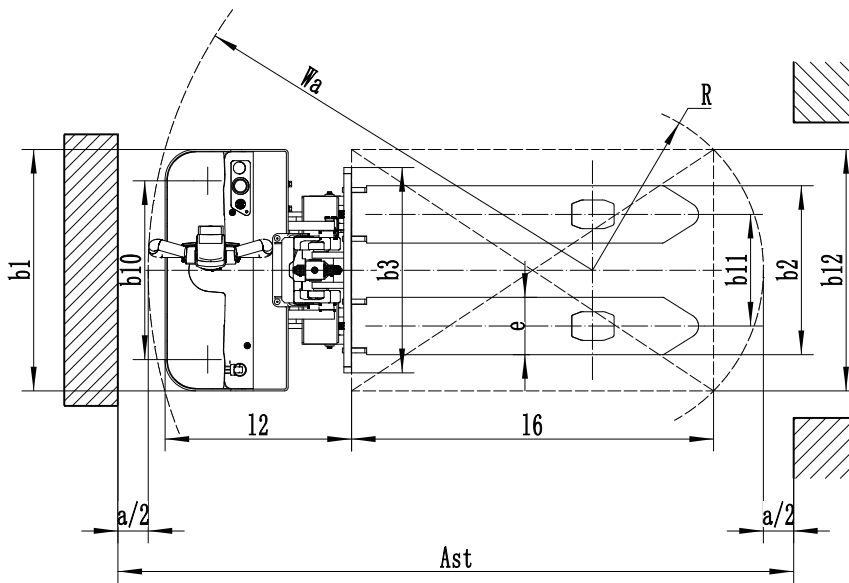
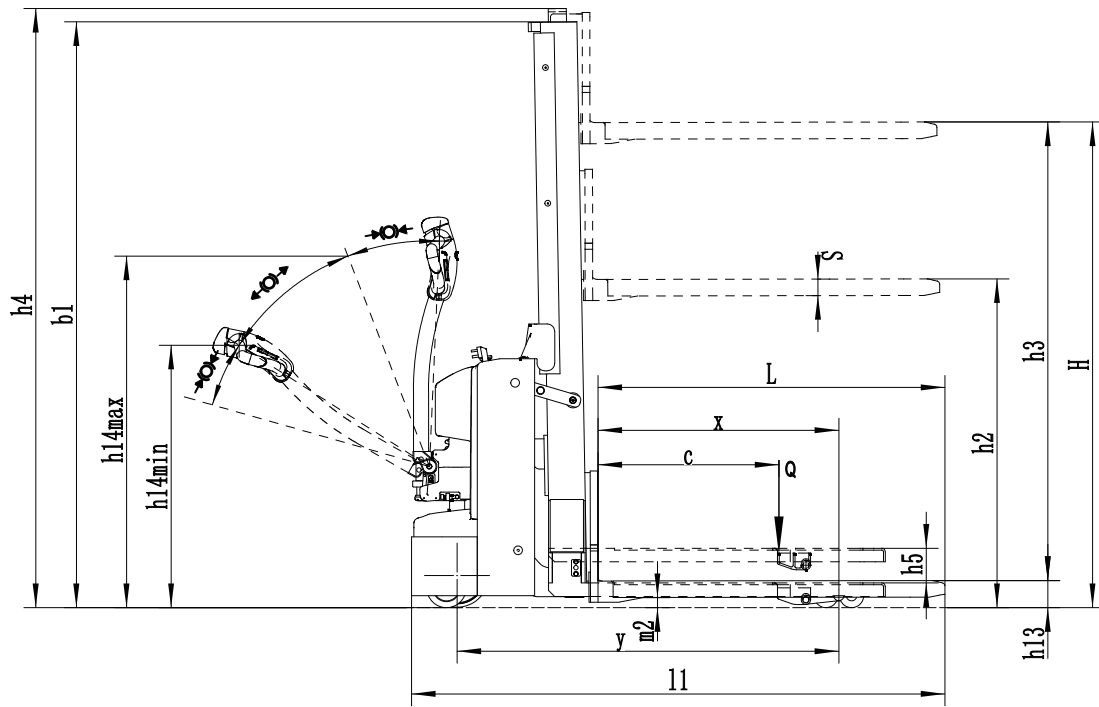
The ESi161 demonstrates higher maneuverability in narrow aisles due to the centralized drive wheel. The truck provides better traction compared to the ones with offset drives.



Li-ion Pedestrian Double-deck Stacker 1.6T

ESi161

| | | | | | | |
|---------------------|------------------|---|---------------------------------------|-------|-----------------|----|
| Distinguishing mark | 1.1 | Manufacturer | | | EP | |
| | 1.2 | Model designation | | | ESi161 | |
| | 1.3 | Drive | | | Electric | |
| | 1.4 | Operator type | | | Pedestrian | |
| | 1.5 | Load capacity | Q | kg | 1600 | |
| | 1.5.1 | Load capacity, load with mast lift | Q1 | kg | 800 | |
| | 1.5.2 | Load capacity, load with support arm lift | Q2 | kg | 1600 | |
| | 1.6 | Load center distance | c | mm | 600 | |
| | 1.8 | Load distance, centre of drive axle to fork | x | mm | 798 | |
| Service weight | 1.9 | Wheelbase | y | mm | 1265 | |
| | 2.1 | Service weight | | kg | 510 | |
| | 2.2 | Axle loading, laden front/rear | | kg | 550/1560 | |
| Tyres/chassis | 2.3 | Axle loading, unladen front/rear | | kg | 375/135 | |
| | 3.1 | Tyre type | | | Polyurethane | |
| | 3.2.1 | Tyre size, front | | mm | Ø210×70 | |
| | 3.3.1 | Tyre size, rear | | mm | Ø80×61 | |
| | 3.4 | Additional wheels (castor wheels) | | mm | Ø130×55 | |
| | 3.5 | Wheels, number front/rear (x=drive wheels) | | mm | 1, 2 / 4 | |
| | 3.6.1 | Tread width, front | b10 | mm | 592 | |
| Dimensions | 3.7.1 | Tread width, rear | b11 | mm | 370 | |
| | 4.0 | Max. Lift Height | H | mm | 1608 | |
| | 4.2 | Retracted mast height | h1 | mm | 1942 | |
| | 4.3 | Free lift | h2 | mm | 1515 | |
| | 4.4 | Lift height | h3 | mm | 1520 | |
| | 4.5 | Height, mast extended | h4 | mm | 1986 | |
| | 4.6 | Initial lift | h5 | mm | 115 | |
| | 4.9 | Height of tiller handle in drive position min./max. | h14 | mm | 800/1190 | |
| | 4.10 | Height of wheel arms | h8 | mm | — | |
| | 4.15 | Lowered height | h13 | mm | 91 | |
| | 4.19 | Overall length | l1 | mm | 1770 | |
| | 4.20 | Length to face of forks | l2 | mm | 620 | |
| | 4.21 | Overall width | b1/b2 | mm | 800 | |
| | 4.22 | Fork dimensions | s/e/l | mm | 55×190×1150 | |
| | 4.24 | Fork carriage width | b3 | mm | 680 | |
| | 4.25 | Distance between fork-arms | b5 | mm | 560 | |
| | 4.26 | Distance between wheel arms/loading surfaces | b4 | mm | — | |
| | Performance data | 4.31 | Ground clearance, laden, below mast | m1 | mm | — |
| | | 4.32 | Ground clearance, center of wheelbase | m2 | mm | 33 |
| 4.34.1 | | Aisle width for pallets 1000×1200 crossways | Ast | mm | 2306 | |
| 4.34.2 | | Aisle width for pallets 800×1200 lengthways | Ast | mm | 2240 | |
| 4.35 | | Turning radius | Wa | mm | 1473 | |
| 5.1 | | Travel speed, laden/unladen | | km/ h | 4/4.5 | |
| 5.2 | | Lifting speed, laden/unladen | | m/s | 0.1/0.12 | |
| 5.3 | | Lowering speed, laden/unladen | | m/s | 0.1/0.07 | |
| 5.8 | | Max. gradeability, laden/unladen | | % | 3/10 | |
| 5.10 | | Service brake | | | Electromagnetic | |
| Electric-engine | 6.1 | Drive motor rating S2 60 min | | kW | 0.75 | |
| | 6.2 | Lift motor rating at S3 15% | | kW | 2.2 | |
| | 6.4 | Battery voltage/nominal capacity | | V/Ah | 24/100 | |
| | 6.5 | Battery weight | | kg | 28 | |
| | 6.6 | Energy consumption according to DIN EN 16796 | | kWh/h | 0.4 | |
| | 6.7 | Turnover output according to VDI 2198 | | t/h | 22.73 | |
| | 6.8 | Turnover efficiency according to VDI 2198 | | t/kWh | 63.72 | |
| | Addition data | 8.1 | Type of drive control | | | DC |
| 10.5 | | Steering design | | | Mechanical | |
| 10.7 | | Sound pressure level at the driver's ear | | dB(A) | 74 | |
| 15.1 | | Charger output current | | A | 30 | |



Mast Option:

| Mast types | Lift height h_3+h_{13} (mm) | Height, mast lowered h_1 (mm) | Free lift h_2 (mm) | Height, mast extended h_4 (mm) |
|--------------|----------------------------------|------------------------------------|-------------------------|-------------------------------------|
| Simplex Mast | 1608 | 1942 | 1515 | 1986 |

Option:

| Optional items | ESi61 |
|---|-------------------------|
| Fork dimension | ●560*1150 |
| Fork carriage width | ●680mm |
| Load wheel type | ●Double |
| Load wheel material | ●Polyurethane |
| Drive wheel material | ●Polyurethane |
| Battery capacity | ●100Ah |
| Charger | ●24V-30A internal |
| Battery display indicator (BDI) | ●With hourmeter |
| Tiller head type | ●ET big tiller head |
| Castor wheels | ●Yes and not customized |
| Vertical handle: Creep speed | ●Yes and not customized |
| Note: ●Standard ○ Optional - Inconformity | |