

4-wheel Warehouse Cushion Tire Forklift EFLA251



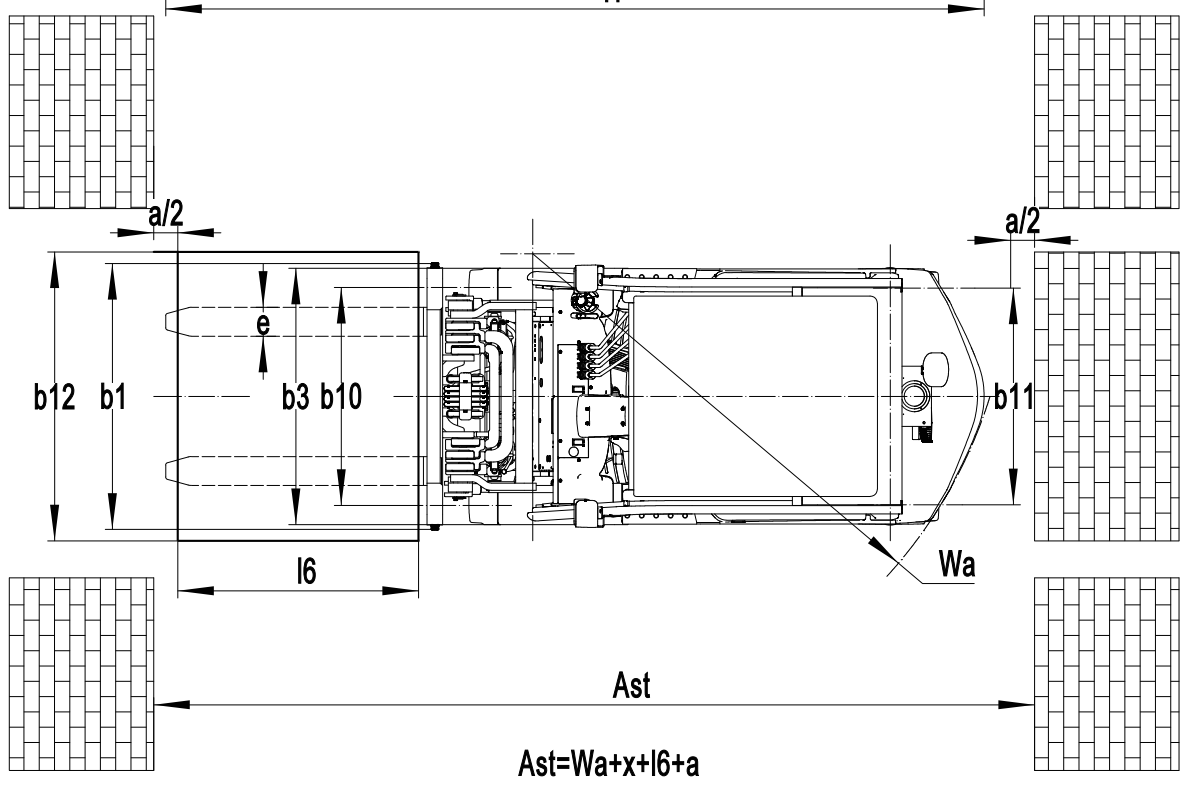
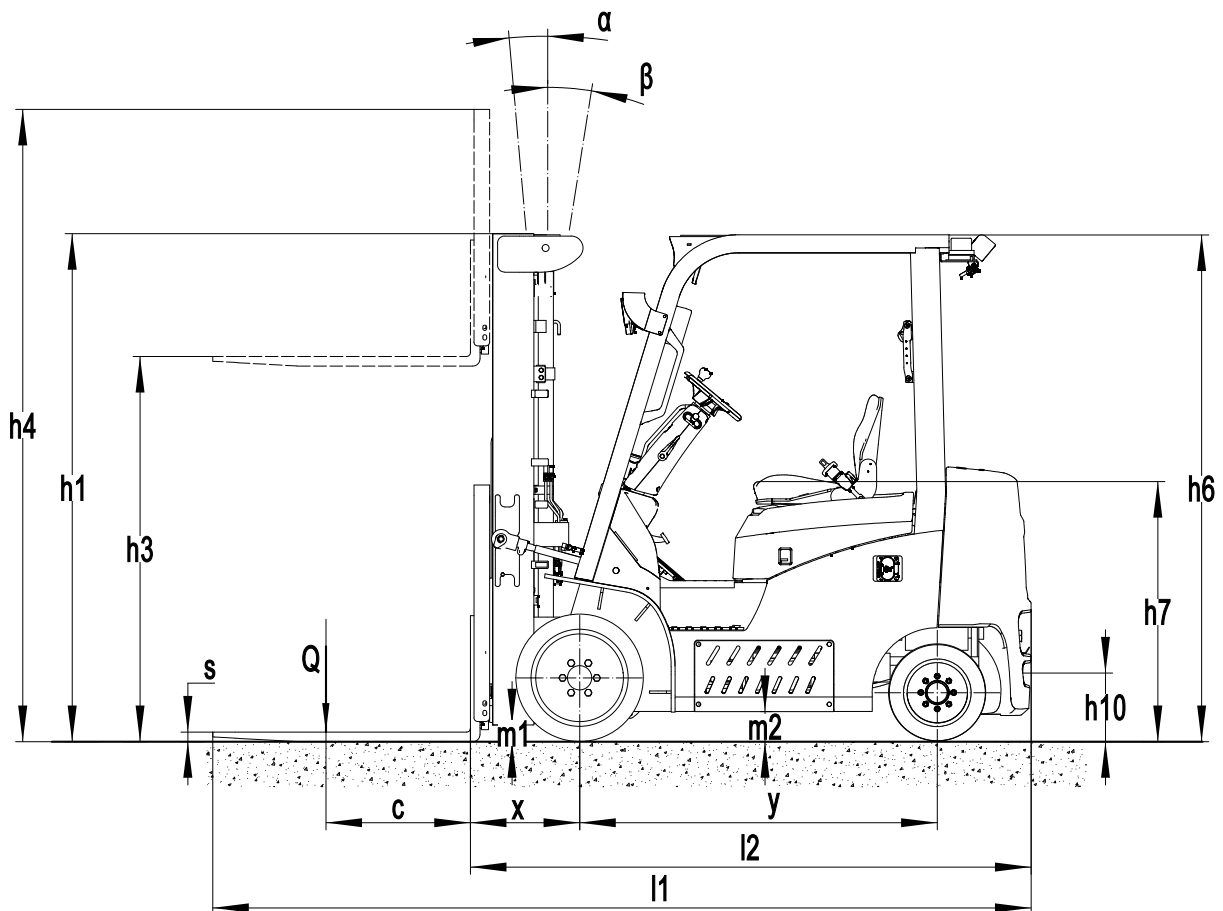
- 5,000 lb. capacity with 3-way valve and integral side-shift
- 4-way valve and side shifting fork positioner (optional)
- Lithium technology has proven itself as an emission and maintenance-free alternative to internal combustion engines
- The EFLA251 offers an 80V system with battery options of 230Ah or 460Ah with on-board charging from any 110v source
- External Chargers up to 155A allow empty-to-full charging in under 2 hours.
- The EFLA251 features spacious, simplified instrumentation and an LCD display that clearly indicates speed, state-of-charge, machine hours, and other operator information

Manufacturer			EP Equipment
Model designation			EFLA251
Drive			Electric
Load capacity	Q	lb.	5000
Load center distance	c	in.	24
Service weight		lb.	9240
Collapsed Height	h1	in.	81.7
Lift height	h3	in.	189
Height, mast extended	h4	in.	237
Length to face of forks	l2	in.	91.7
Overall width	b1/b2	in.	41.9
Fork dimensions	s/e/l	in.	1.57*4.8*42
Turning radius	Wa	in.	78.4
Travel speed, loaded/unloaded		mph	9.3/9.9
Lifting speed, loaded/unloaded		fpm	120/126
Lowering speed, loaded/unloaded		fpm	98/98
Max. gradeability, loaded/unloaded		%	15/16
Drive motor rating S2 60 min		kW	8.5
Battery voltage/nominal capacity		V/Ah	80V/230 or 80/460

4-Wheel Warehouse Cushion Tire Forklift EFLA251

Specs	1.1	Manufacturer				EP Equipment
	1.2	Model designation				EFLA251
	1.3	Drive				Electric
	1.4	Operator type				Seated
	1.5	Load capacity	Q	lb.		5000
	1.6	Load center distance	c	in.		24
	1.8	Load distance, center of drive axle to fork	x	in.		17.9
	1.9	Wheelbase	y	in.		58.5
	Ratings	2.1	Service weight		lb.	
2.2		Axle loading, loaded front/rear		lb.		11536/3120
2.3		Axle loading, unloaded front/rear		lb.		4396/5102
Tires/chassis	3.1	Tire type				Solid Rubber Cushion
	3.2	Tire size, front				21x7-15
	3.3	Tire size, rear				16x6-10.5
	3.5	Wheels, number front/rear (x=drive wheels)		in.		2X/2
	3.6	Tread width, front	b_{10}	in.		35.6
	3.7	Tread width, rear	b_{11}	in.		35.6
Dimensions	4.1	Tilt of mast/fork carriage forward/backward	α/β	°		6/5
	4.2	Retracted mast height	h_1	in.		82.5
	4.3	Free lift	h_2	in.		34.5
	4.4	Lift height	h_3	in.		189
	4.5	Height, mast extended	h_4	in.		237
	4.7	Height of overhead guard (cabin)	h_6	in.		83.1
	4.8	Seat height/standing height	h_7	in.		42.9
	4.12	Tow coupling height	h_{10}	in.		10.6
	4.19	Overall length	l_1	in.		133.8
	4.20	Length to face of forks	l_2	in.		91.7
	4.21	Overall width	b_1/b_2	in.		41.9
	4.22	Fork dimensions	$s \times e \times l$	in.		1.57*4.8*42
	4.23	A,B Fork carriage class/type A, B				2A
	4.24	Fork carriage width	b_3	in.		40.9
	4.31	Ground clearance, loaded, below mast	m_1	in.		3.95
	4.32	Ground clearance, center of wheelbase	m_2	in.		4.3
	4.34.1	Right angle stack = $X+Wa$ (Add load length + Clearance)		in.		96.3
4.35	Turning radius	Wa	in.		78.4	
Performance	5.1	Travel speed, loaded/unloaded		mph		9.3/9.9
	5.2	Lifting speed, loaded/unloaded		fpm		120/126
	5.3	Lowering speed, loaded/unloaded		fpm		98/98
	5.8	Max. gradeability, loaded/unloaded		%		15/16
Brakes	5.10	Service brake				Hydraulic
	5.11	Parking brake				Mechanical
Components Additional Data	6.1	Drive motor rating S2 60 min		kW		8.5
	6.2	Lift motor rating at S3 15%		kW		26
	6.4	Battery voltage/nominal capacity		V/Ah		80V/230 or 80/460
	6.5	Battery weight		lb.		650
	8.1	Type of drive control				AC
	10.1	Operating pressure for attachments		psi		2750
	10.2	Oil flow for attachments		gpm		8.5-16
	10.5	Steering design				Hydraulic
	10.7	Sound pressure level at the driver's ear		dB(A)		70
	15.1	Charger output current		A		15, 35, 100, 155

If there are improvements of technical parameters or configurations, no further notice will be given.
The diagram shown may contain non-standard configurations.
Minimum Aisle Width uses 48" for load length and 12" for clearance.



Standard Features

- Rear Blue light Standard
- Headlights, Brake Lights, Turn Signals, Warning Light
- Telematics
- Back up alarm
- Rear Grab Bar with Horn
- Cushion Tires
- Adjustable suspension seat with armrests
- Integral side shifter with 3-function hydraulics
- 189" Mast 3 Stage with Free Lift
- 42" Forks
- 42" Load Backrest
- 80V460ah Li-Ion UL Battery
- Accessory on-board Power/Charging
- Cup Holder
- LED Display with Bluetooth Connectivity
- Rearview mirror
- IPX4 Rating
- Hydraulic Oil Cooler

Optional Equipment

- 197" Mast 3 Stage with Free Lift
- 82" 2-Stage Truckers Mast
- 258"4-Stage Mast with Integral Side Shifter 3-function hydraulics
- 48" Forks
- 48" LBR
- 60" LBR
- No Side Shifter with 4-function hydraulics
- Hang-on Side Shifter with 4-function hydraulics
- Side Shifting Fork Positioner with 4-function hydraulics
- LED Rear Light
- Front Blue Light
- Red Curtain Lights
- Non-Marking Tires
- 80V2300ah Li-Ion UL Battery
- Internal 120/240VAC Charger 15/35A output
- External 120/240VAC Charger 15/35A output
- External Charger 480VAC 3ph Input, 100A Output
- External Charger 480VAC 3ph Input, 155A Output