



# Electric Performance Straddle Stacker 4,000lbs ES18-40WA



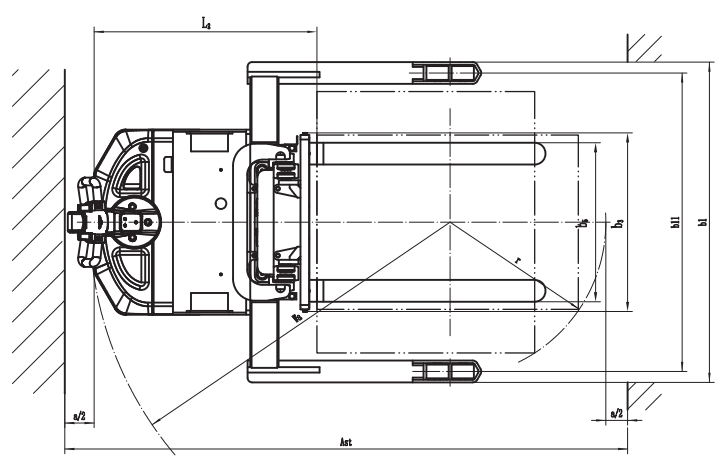
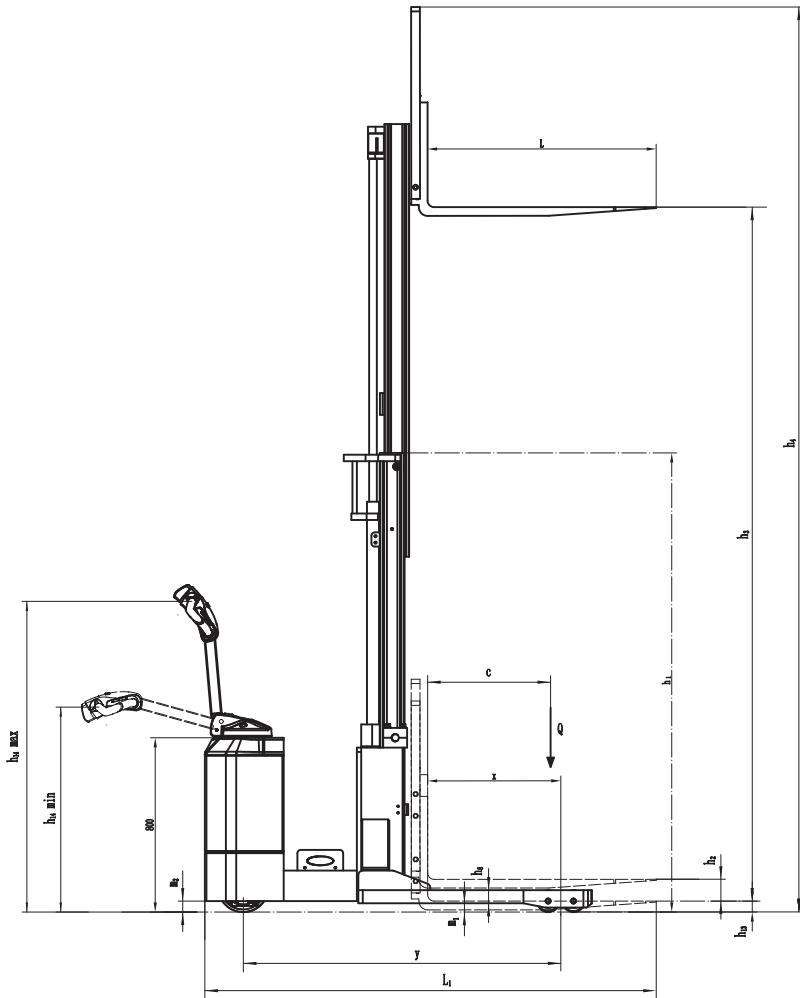
- Lift heights from 126" to 177"
- Ergonomically designed controls and available Side-Shift option
- Variety of Battery options include AGM, Flooded, and Lithium
- Center tiller handle provides excellent line of sight for operators
- Fixed Straddle legs

Manufacturer			EP	EP	EP
Model designation			ES18-40WA	ES18-40WA	ES18-40WA
Drive			Electric	Electric	Electric
Base capacity	Q	lb.	4000	4000	4000
Load center distance	c	in.	24	24	24
Service weight		lb.	2717	2944	3034
Collapsed height	h1	in.	83.5	72	80
Maximum fork height	h3	in.	126	157	177
Length to face of forks	l2	in.	40	40	40
Overall width	b1/b2	in.	50/54/58	50/54/58	50/54/58
Fork dimensions	s/e/l	in.	1.5x4.8x42	1.5x4.8x42	1.5x4.8x42
Turning radius	Wa	in.	65	65	65
Max. gradeability, loaded/unloaded		%	6/10	6/10	6/10
Travel speed, loaded/unloaded		mph	3.1/3.4	3.1/3.4	3.1/3.4
Lifting speed, loaded/unloaded		fpm	32/37	32/37	32/37
Lowering speed, loaded/unloaded		fpm	56/29	56/29	56/29
Battery voltage/nominal capacity		V/Ah	24V/205Ah Li-ion 24V/224Ah AGM 24V/425Ah, 24V/510Ah Lead-acid	24V/205Ah Li-ion 24V/224Ah AGM 24V/425Ah, 24V/510Ah Lead-acid	24V/205Ah Li-ion 24V/224Ah AGM 24V/425Ah, 24V/510Ah Lead-acid

# Electric Performance Straddle Stacker 4,000lbs ES18-40WA

Distinguishing mark	1.1	Manufacturer			EP	EP	EP
	1.2	Model designation			ES18-40WA	ES18-40WA	ES18-40WA
	1.3	Drive			Electric	Electric	Electric
	1.4	Operator type			Pedestrian	Pedestrian	Pedestrian
	1.5	Base capacity	Q	lb.	4000	4000	4000* Derate above 157"
	1.6	Load center distance	c	in.	24	24	24
	1.8	Load distance, center of drive axle to fork	x	in.	24	24	24
	1.9	Wheelbase	y	in.	57	57	57
	Service weight	2.1	Service weight		lb.	2717	2944
Tires/chassis	3.1	Tire type			Polyurethane	Polyurethane	Polyurethane
	3.2	Tire size, front			Φ9x3	Φ9x3	Φ9x3
	3.3	Tire size, rear			Φ4x2.9	Φ4x2.9	Φ4x2.9
	3.4	Additional wheels (castor wheels)		in.	Φ5x2.5	Φ5x2.5	Φ5x2.5
	3.5	Wheels, number front/rear (x=drive wheels)		in.	1x+2/4	1x+2/4	1x+2/4
	3.6.1	Tread width, front	b <sub>10</sub>	in.	22.8	22.8	22.8
	3.7.1	Tread width, rear	b <sub>11</sub>	in.	46/50/54	46/50/54	46/50/54
Dimensions	4.0	Max. Lift Height	H	in.	126	157	177
	4.2	Retracted mast height	h <sub>1</sub>	in.	83.5	72	80
	4.3	Free lift	h <sub>2</sub>	in.	6	50	58
	4.4	Lift height	h <sub>3</sub>	in.	126	157	177
	4.5	Height, mast extended	h <sub>4</sub>	in.	162	193	213
	4.9	Height of tiller handle in drive position min./max.	h <sub>14</sub>	in.	39/59	39/59	39/59
	4.10	Height of wheel arms	h <sub>8</sub>	in.	4	4	4
	4.15	Lowered height	h <sub>13</sub>	in.	2	2	2
	4.19	Overall length	l <sub>1</sub>	in.	82	82	82
	4.20	Length to face of forks	l <sub>2</sub>	in.	40	40	40
	4.21	Overall width	b <sub>1</sub> /b <sub>2</sub>	in.	50/54/58	50/54/58	50/54/58
	4.22	Fork dimensions	s×e×l	in.	1.5x4.8x42	1.5x4.8x42	1.5x4.8x42
	4.24	Fork carriage width	b <sub>3</sub>	in.	32	32	32
	4.25	Fork spread	b <sub>5</sub>	in.	8-31	8-31	8-31
	4.26	Distance between wheel legs/loading surfaces	b <sub>4</sub>	in.	42.1/46/50	42.1/46/50	42.1/46/50
4.31	Ground clearance, laden, below mast	m <sub>1</sub>	in.	3.2	3.2	3.2	
4.32	Ground clearance, center of wheelbase	m <sub>2</sub>	in.	2	2	2	
4.35	Turning radius	W <sub>a</sub>	in.	65	65	65	
Performance data	5.1	Travel speed, loaded/unloaded		mph	3.1/3.4	3.1/3.4	3.1/3.4
	5.2	Lifting speed, loaded/unloaded		fpm	32/37	32/37	32/37
	5.3	Lowering speed, loaded/unloaded		fpm	56/29	56/29	56/29
	5.8	Max. gradeability, loaded/unloaded		%	6/10	6/10	6/10
	5.10	Service brake			Electromagnetic	Electromagnetic	Electromagnetic
Electric-engine	6.1	Drive motor rating S2 60 min		kW	1.1	1.1	1.1
	6.2	Lift motor rating at S3 15%		kW	3	3	3
	6.4	Battery voltage/nominal capacity		V/Ah	24V/205Ah Li-ion 24V/224Ah AGM 24V/425Ah, 24V/510Ah Lead-acid	24V/205Ah Li-ion 24V/224Ah AGM 24V/425Ah, 24V/510Ah Lead-acid	24V/205Ah Li-ion 24V/224Ah AGM 24V/425Ah, 24V/510Ah Lead-acid
	6.5	Battery weight		lb.	340 min	340 min	340 min
	8.1	Type of drive control			AC	AC	AC
Additional data	10.5	Steering design			Mechanical	Mechanical	Mechanical
	10.7	Sound pressure level at the driver's ear		dB	74	74	74
	15.1	Charger output current		A	25, 27, 75, 80	25, 27, 75, 80	25, 27, 75, 80

If there are improvements of technical parameters or configurations, no further notice will be given.  
The diagram shown may contain non-standard configurations.



**Aisle Guide**

Load Width	Load Length		
	36"	40"	48"
36"	79.5	79.5	79.5
40"	80.5	80.5	80.5
48"	80.5	80.5	80.5

For ease of use, add 8" to aisle dimension listed.

**Mast Options**

Mast types	Maximum Fork Height h3+h13 (in)	Collapsed Height h1 (in)	Free lift h2 (in)	Extended Height h4 (in)
2-Stage Mast	126	83.5	6	162
3-Stage Mast	157	72	50	193
	177	80	58	213



WEBSITE



**EP North America**  
4395 Diplomacy Rd  
Fort Worth, TX 76155

LINKEDIN



epforklifts.com • 833.428.0030 • sales@epforklifts.com