



Electric Forkover Stacker ES10-10MM



- 24V AGM Batteries and onboard charger
- Offset tiller handle provides excellent line of sight for operators
- adjustable base legs in 4" increments
- Electromagnetic brake

Manufacturer			EP
Model designation			ES10-10MM
Drive			Electric
Load capacity	Q	lb.	2200
Load center distance	c	in.	24
Service weight		lb.	1016
Retracted mast height	h1	in.	76.5
Lift height	h3	in.	62
Length to face of forks	l2	in.	18.3
Overall width	b1/b2	in.	32
Fork dimensions	s/e/l	in.	2.3x6.8x45
Turning radius	Wa	in.	52.5
Max. gradeability, laden/unladen		%	3/10
Travel speed, laden/unladen		mph	2.5/3.1
Lifting speed, laden/unladen		fpm	24/43
Lowering speed, laden/unladen		fpm	24/22
Battery voltage/nominal capacity		V/Ah	24V/85Ah

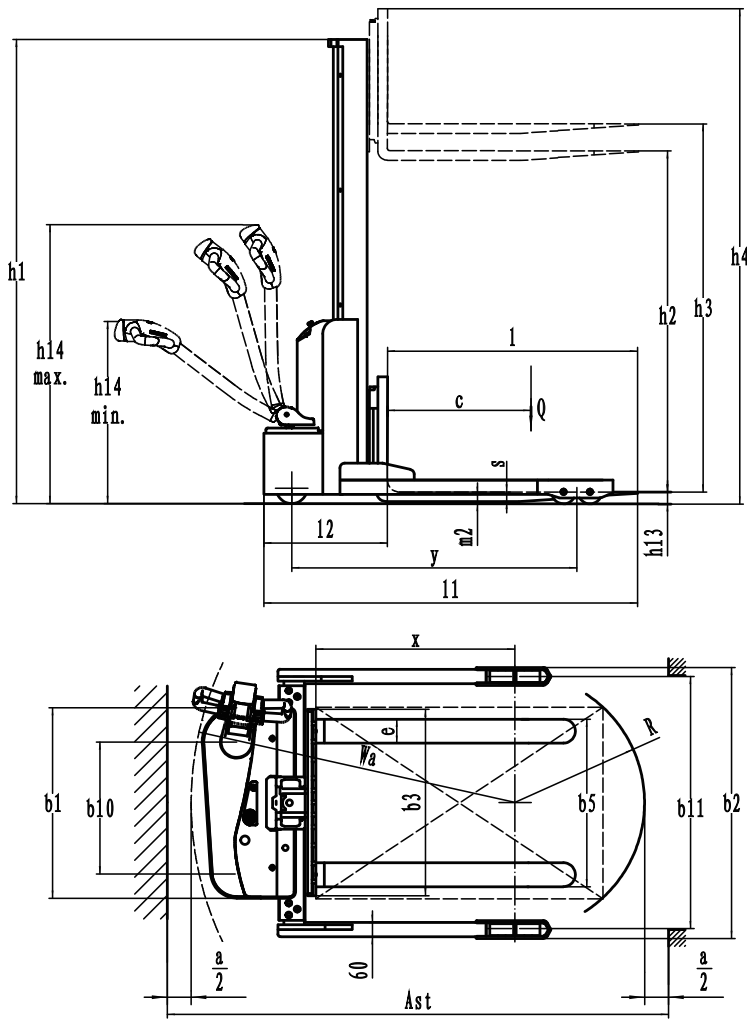
Electric Forkover Stacker

ES10-10MM

Distinguishing mark	1.1	Manufacturer				EP
	1.2	Model designation				ES10-10MM
	1.3	Drive				Electric
	1.4	Operator type				Walkie
	1.5	Load capacity	Q	lb.		2200
	1.6	Load center distance	c	in.		24
	1.8	Load distance, center of drive axle to fork	x	in.		31.7
	1.9	Wheelbase	y	in.		44.3
	Service weight	2.1	Service weight		lb.	
2.2		Axle loading, laden front/rear		lb.		1410/1806
2.3		Axle loading, unladen front/rear		lb.		756/262
Tires/chassis	3.1	Tire type				Polyurethane
	3.2	Tire size, front				8.3x2.8
	3.3	Tire size, rear				3.1x2.4
	3.4	Additional wheels (castor wheels)		in.		5x2
	3.5	Wheels, number front/rear (x=drive wheels)		in.		1x, 1/4
	3.6.1	Tread width, front	b ₁₀	in.		21
	3.7.1	Tread width, rear	b ₁₁	in.		15
	Dimensions	4.0	Max. Lift Height	H	in.	
4.2		Retracted mast height	h ₁	in.		76.5
4.3		Free lift	h ₂	in.		56
4.4		Lift height	h ₃	in.		62
4.5		Height, mast extended	h ₄	in.		77.6
4.9		Height of tiller handle in drive position min./max.	h ₁₄	in.		33.9/47.3
4.10		Height of wheel legs	h ₈	in.		4
4.15		Lowered height	h ₁₃	in.		3.5
4.19		Overall length	l ₁	in.		63.6
4.20		Length to face of forks	l ₂	in.		18.3
4.21		Overall width	b ₁ /b ₂	in.		32
4.22		Fork dimensions	s×e×l	in.		2.3x6.8x45
4.24		Fork carriage width	b ₃	in.		24
4.25		Fork spread	b ₅	in.		21.7
Performance data		4.26	Distance between wheel legs/loading surfaces	b ₄	in.	
	4.31	Ground clearance, laden, below mast	m ₁	in.		1.2
	4.32	Ground clearance, center of wheelbase	m ₂	in.		1.6
	4.35	Turning radius	Wa	in.		52.5
	5.1	Travel speed, laden/unladen		mph		2.5/3.1
	5.2	Lifting speed, laden/unladen		fpm		24/43
	5.3	Lowering speed, laden/unladen		fpm		24/22
	5.8	Max. gradeability, laden/unladen		%		3/10
	5.10	Service brake				Electromagnetic
	6.1	Drive motor rating S2 60 min		HP		0.65
Electric-engine	6.2	Lift motor rating at S3 15%		HP		2.2
	6.4	Battery voltage/nominal capacity		V/Ah		24V/85Ah
	6.5	Battery weight		lb.		95
	8.1	Type of drive control				DC
Additional data	10.5	Steering design				Mechanical
	10.7	Sound pressure level at the driver's ear		dB(A)		74
	15.1	Charger output current		A		15

If there are improvements of technical parameters or configurations, no further notice will be given.
The diagram shown may contain non-standard configurations.

ES10-10MM



Aisle Guide

Load Width	Load Length		
	36"	40"	48"
36"	57.3	57.3	57.3
40"	57.5	58.6	58.6
48"	63	63	63

For ease of use, add 8" to aisle dimension listed.

Mast Options

ES10-10MM

Mast types	Maximum Fork Height h3+h13 (in)	Collapsed Height h1 (in)	Free lift h2 (in)	Extended Height h4 (in)
Mono mast	62	76.5	56	98.3



WEBSITE



EP North America
4395 Diplomacy Rd
Fort Worth, TX 76155

LINKEDIN



epforklifts.com • 833.428.0030 • sales@epforklifts.com