

Electric Straddle Stacker Lift Heights 62" - 96" - 116" ES10-22MM ES10-22DM



- 24V AGM Batteries and onboard charger
- Offset tiller handle provides excellent line of sight for operators adjustable base legs in 4" increments
- Variety of lift heights up to 116"

Manufacturer			EP	EP	EP
Model designation			ES10-22MM	ES10-22DM	ES10-22DM
Drive			Electric	Electric	Electric
Load capacity	Q	lb.	2200	2200	2200
Load center distance	c	in.	24	24	24
Service weight		lb.	1200	1450	1500
Retracted mast height	h1	in.	76.5	72.5	82.5
Lift height	h3	in.	62	96	116
Length to face of forks	l2	in.	20	23.5	23.5
Overall width	b1/b2	in.	44.7/48.6/52.5/56.5	44.7/48.6/52.5/56.5	44.7/48.6/52.5/56.5
Fork dimensions	s/e/l	in.	1.5x4x42	1.5x4x42	1.5x4x42
Turning radius	Wa	in.	55.3	55.3	55.3
Max. gradeability, laden/unladen		%	3/10	3/10	3/10
Travel speed, laden/unladen		mph	2.5/3.1	2.5/3.1	2.5/3.1
Lifting speed, laden/unladen		fpm	24/43	24/43	24/43
Lowering speed, laden/unladen		fpm	24/22	24/22	24/22
Battery voltage/nominal capacity		V/Ah	24V/85Ah	24V/85Ah	24V/85Ah

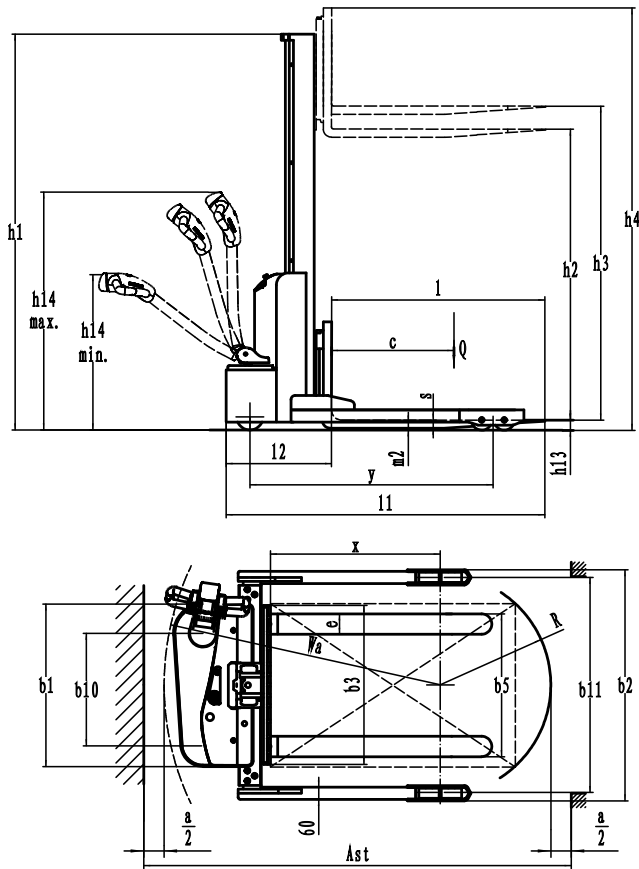
Electric Straddle Stacker

ES10-22MM / ES10-22DM

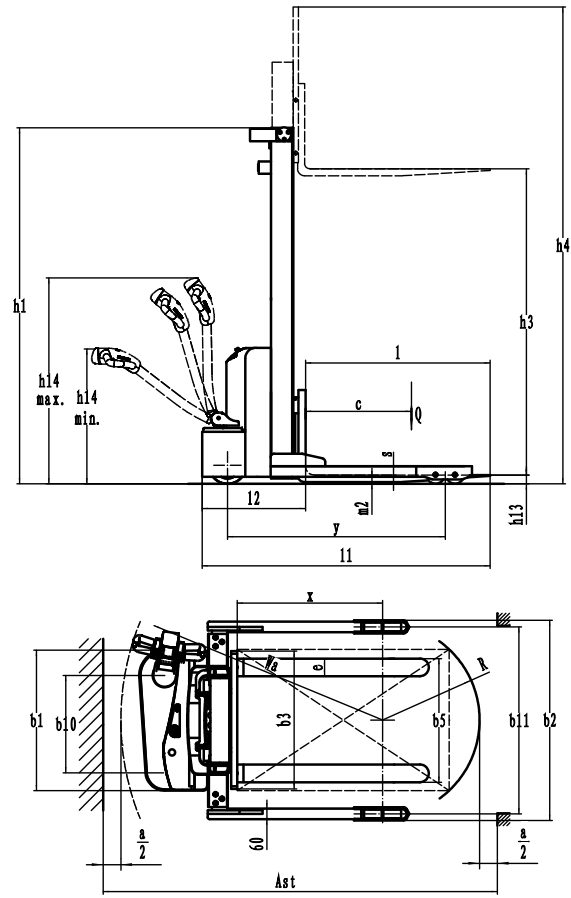
Distinguishing mark	1.1	Manufacturer				EP		EP		EP
	1.2	Model designation				ES10-22MM		ES10-22DM		ES10-22DM
	1.3	Drive				Electric		Electric		Electric
	1.4	Operator type				Standing		Standing		Standing
	1.5	Load capacity	Q	lb.		2200		2200		2200
	1.6	Load center distance	c	in.		24		24		24
	1.8	Load distance, center of drive axle to fork	x	in.		33.46		33.27		33.27
	1.9	Wheelbase	y	in.		47.6		50.79		50.79
Service weight	2.1	Service weight		lb.		1200		1450		1500
	2.2	Axle loading, laden front/rear		lb.		1502/1892		1619/2026		1669/2026
	2.3	Axle loading, unladen front/rear		lb.		924/270		1160/280		1210/280
Tires/chassis	3.1	Tire type				Polyurethane		Polyurethane		Polyurethane
	3.2	Tire size, front				8.3x2.8		8.3x2.8		8.3x2.8
	3.3	Tire size, rear				4x2		4x2		4x2
	3.4	Additional wheels (castor wheels)		in.		4x2		4x2		4x2
	3.5	Wheels, number front/rear (x=drive wheels)		in.		1x, 1/4		1x, 1/4		1x, 1/4
	3.6.1	Tread width, front	b ₁₀	in.		21		21		21
	3.7.1	Tread width, rear	b ₁₁	in.		41.7/45.7/49.6/53.5		41.7/45.7/49.6/53.5		41.7/45.7/49.6/53.5
Dimensions	4.0	Max. Lift Height	H	in.		62		96		116
	4.2	Retracted mast height	h ₁	in.		76.5		72.5		82.5
	4.3	Free lift	h ₂	in.		56		0		0
	4.4	Lift height	h ₃	in.		62		96		116
	4.5	Height, mast extended	h ₄	in.		98.3		132		153
	4.9	Height of tiller handle in drive position min./max.	h ₁₄	in.		33.9/47.3		33.9/47.3		33.9/47.3
	4.10	Height of wheel arms	h ₈	in.		4		4		4
	4.15	Lowered height	h ₁₃	in.		2.4		2.4		2.4
	4.19	Overall length	l ₁	in.		62		65.5		65.5
	4.20	Length to face of forks	l ₂	in.		20		23.5		23.5
	4.21	Overall width	b ₁ /b ₂	in.		44.7/48.6/52.5/56.5		44.7/48.6/52.5/56.5		44.7/48.6/52.5/56.5
	4.22	Fork dimensions	s×e×l	in.		1.5x4x42		1.5x4x42		1.5x4x42
	4.24	Fork carriage width	b ₃	in.		30.7		30.7		30.7
	4.25	Fork spread	b ₅	in.		8-30		8-30		8-30
	4.26	Distance between wheel arms/loading surfaces	b ₄	in.		38/42/46/50		38/42/46/50		38/42/46/50
4.31	Ground clearance, laden, below mast	m ₁	in.		1.18		1.18		1.18	
4.32	Ground clearance, center of wheelbase	m ₂	in.		1.57		1.57		1.57	
4.35	Turning radius	Wa	in.		55.3		55.3		55.3	
Performance data	5.1	Travel speed, laden/unladen		mph		2.5/3.1		2.5/3.1		2.5/3.1
	5.2	Lifting speed, laden/unladen		fpm		24/43		24/43		24/43
	5.3	Lowering speed, laden/unladen		fpm		24/22		24/22		24/22
	5.8	Max. gradeability, laden/unladen		%		3/10		3/10		3/10
	5.10	Service brake				Electromagnetic		Electromagnetic		Electromagnetic
Electric-engine	6.1	Drive motor rating S2 60 min		HP		0.87		0.87		0.87
	6.2	Lift motor rating at S3 15%		HP		2.95		2.95		2.95
	6.4	Battery voltage/nominal capacity		V/Ah		24V/85Ah		24V/85Ah		24V/85Ah
	6.5	Battery weight		lb.		95		95		95
	8.1	Type of drive control				DC		DC		DC
Additional data	10.5	Steering design				Mechanical		Mechanical		Mechanical
	10.7	Sound pressure level at the driver's ear		dB(A)		74		74		74
	15.1	Charger output current		A		15		15		15

If there are improvements of technical parameters or configurations, no further notice will be given.
The diagram shown may contain non-standard configurations.

ES10-22MM



ES10-22DM



Mast Options

ES10-22MM

Mast types	Maximum Fork Height h3+h13 (in)	Collapsed Height h1 (in)	Free lift h2 (in)	Extended Height h4 (in)
Mono mast	62	76.5	—	98.3

ES10-22DM

Mast types	Maximum Fork Height h3+h13 (in)	Collapsed Height h1 (in)	Free lift h2 (in)	Extended Height h4 (in)
2-Standard Mast	96	72.5	—	132
	116	82.5	—	153